

Port Report (YTD)

January - May

	2006	2007	2008	% 2008/2007
Ships Trading	59	82	77	-6.1%
Port Calls	196	223	214	-4.0%
Ship Hours Worked	1,996	2,166	1,630	-24.7%
Ship Hours Lost	0	8	24	200.0%
Working Days	150	149	146	-2.0%
Working Days Without Ships	14	11	22	100.0%
Days Ships Unable to Work	0	1	3	200.0%
Overtime (Hours)	312	196	207	5.6%

Cargo Tons

Domestic Cargo	148,911	146,110	130,307	-10.8%
Intransit Cargo	0	0	0	
Tons Handled per Hour	75	67	80	18.5%
Containerized Cargo	106,287	111,285	100,478	-9.7%
Break Bulk Cargo	42,624	34,825	29,828	-14.3%
Cement	34,666	27,472	25,113	-8.6%

Aggregates	156,919	202,844	148,634	-26.7%
------------	---------	---------	---------	--------

Nos. (In)(TEU)

Containers	7,768	8,011	7,436	-7.2%
Flatracks	2,050	1,631	1,345	-17.5%
Reefers	2,078	2,168	2,279	5.1%
Trailers	8	4	0	-100.0%
Tanks	101	124	171	37.9%
Vehicles	2,028	1,240	1,365	10.1%

Nos. (Out)(TEU)

Containers	8,338	8,490	7,519	-11.4%
Flatracks	2,114	1,742	1,420	-18.5%
Reefers	2,104	2,230	2,369	6.2%
Trailers	12	0	0	
Tanks	101	117	157	34.2%

Origins(tons)

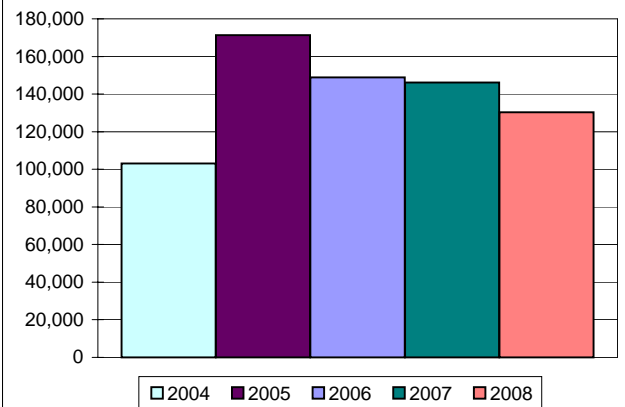
Miami Cargo	32,098	37,721	27,152	-28.0%
Tampa	10,458	6,121	9,500	55.2%
Costa Rica	0	0	0	
Jamaica	10,519	7,692	9,461	23.0%
Colombia	0	0	0	
Port Everglades	55,561	50,598	48,558	-4.0%
Panama	27	0	0	
Japan	938	313	399	27.4%
Cuba	23,852	27,580	25,484	-7.6%
Alabama	5,621	8,935	5,580	-37.5%
Nicaragua	0	0	0	
Dominican Rep.	0	2	44	1900.0%
Mexico	248	0	82	
Maryland, USA		3,086	0	-100.0%
London	42	17	3	-83.4%
Puerto Rico	61	60	55	-8.5%
Honduras	4,030	3,497	2,601	-25.6%
Bahamas	5,450	0	0	
Santo Domingo		99	937	
Other	5	390	451	15.6%

Imp. Gallons

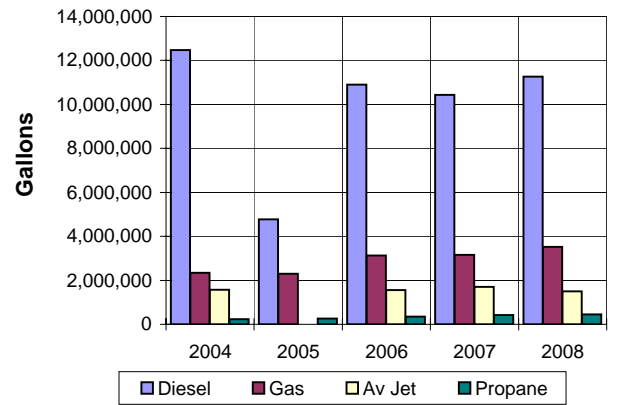
Diesel	10,896,209	10,428,129	11,270,942	8.1%
Gas	3,129,350	3,162,823	3,515,156	11.1%
AV Jet	1,558,968	1,696,763	1,492,765	-12.0%
Propane	356,276	416,642	448,435	7.6%

Passenger Ships Calls	412	381	316	-17.1%
Passengers	941,400	947,098	808,354	-14.6%

Port Authority Domestic Cargo (YTD)



Port Authority Tanker Statistics (YTD)



Port Authority Cruise Ship Passengers (YTD)

