

Port Report (YTD)

January - July

	2006	2007	2008	% 2008/2007
Ships Trading	87	110	108	-1.8%
Port Calls	279	329	299	-9.1%
Ship Hours Worked	2,963	2,874	2,225	-22.6%
Ship Hours Lost	0	8	24	200.0%
Working Days	211	209	205	-1.9%
Working Days Without Ships	20	12	28	133.3%
Days Ships Unable to Work	0	1	3	200.0%
Overtime (Hours)	410	269	299	11.2%

Cargo Tons

Domestic Cargo	215,432	202,191	184,329	-8.8%
Intransit Cargo	0	0	0	
Tons Handled per Hour	73	70	83	17.8%
Containerized Cargo	155,139	152,736	140,452	-8.0%
Break Bulk Cargo	60,293	49,455	43,877	-11.3%
Cement	49,054	39,661	36,810	-7.2%

Aggregates	246,544	268,629	198,958	-25.9%
------------	---------	---------	---------	--------

Nos. (In)(TEU)

Containers	11,198	11,176	10,454	-6.5%
Flatracks	2,963	2,145	1,857	-13.4%
Reefers	2,973	3,026	3,206	5.9%
Trailers	14	6	0	-100.0%
Tanks	157	179	219	22.3%
Vehicles	2,643	1,727	1,844	6.8%

Nos. (Out)(TEU)

Containers	11,439	11,707	10,515	-10.2%
Flatracks	2,942	2,373	1,921	-19.0%
Reefers	2,929	3,099	3,300	6.5%
Trailers	16	4	0	-100.0%
Tanks	153	199	208	4.5%

Origins(tons)

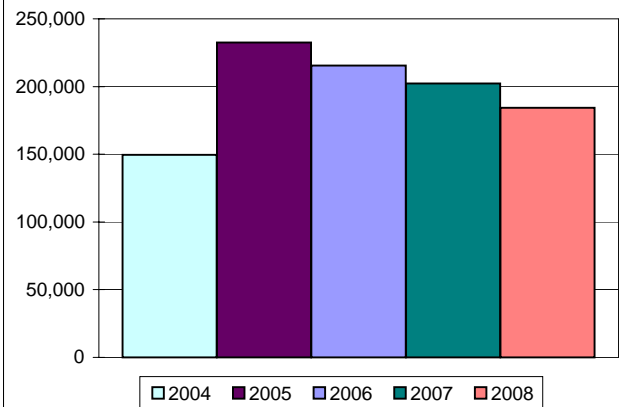
Miami Cargo	46,656	51,490	38,714	-24.8%
Tampa	15,315	9,596	12,328	28.5%
Costa Rica	0	0	0	
Jamaica	12,514	10,540	13,682	29.8%
Colombia	0	0	0	
Port Everglades	79,119	69,436	68,347	-1.6%
Panama	46	0	4	
Japan	1,298	524	626	19.5%
Cuba	37,138	39,985	31,239	-21.9%
Alabama	8,350	12,342	8,810	-28.6%
Nicaragua	0	0	0	
Dominican Rep.	0	2	44	1900.0%
Mexico	415	0	201	
Maryland, USA		3,086	0	-100.0%
London	67	18	3	-83.3%
Puerto Rico	1,182	92	76	-17.6%
Honduras	7,865	4,549	8,546	87.8%
Bahamas	5,450	0	0	
Santo Domingo		99	937	
Other	17	431	774	79.4%

Imp. Gallons

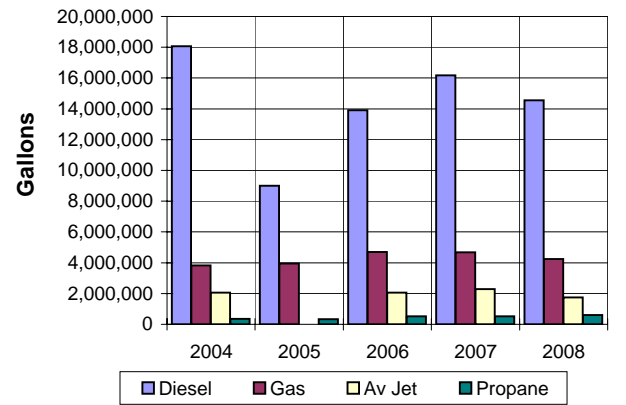
Diesel	13,916,028	16,164,650	14,559,298	-9.9%
Gas	4,692,708	4,675,617	4,245,739	-9.2%
AV Jet	2,054,536	2,291,295	1,752,664	-23.5%
Propane	515,364	521,180	597,023	14.6%

Passenger Ships Calls	497	450	379	-15.8%
Passengers	1,179,073	1,162,141	1,009,988	-13.1%

Port Authority Domestic Cargo (YTD)



Port Authority Tanker Statistics (YTD)



Port Authority Cruise Ship Passengers (YTD)

