

Port Report (YTD)

6-Aug-2009

January - July

	2007	2008	2009	% 2009/2008
Ships Trading	110	108	100	-7.4%
Port Calls	329	299	272	-9.0%
Ship Hours Worked	2,874	2,225	1,744	-21.6%
Working Days	209	205	203	-1.0%
Working Days Without Ships	12	28	35	25.0%
Overtime (Hours)	269	299	162	-45.8%

Cargo (Imported) Tons

Cargo	201,652	184,241	157,412	-14.6%
Intransit Cargo	0	0	0	
Tons Handled per Hour	70.16	82.80	90.26	9.0%
Containerized Cargo	152,736	140,452	125,592	-10.6%
Break Bulk Cargo	9,255	6,979	6,091	-12.7%
Cement Bulk	39,661	36,810	25,729	-30.1%

Aggregates	268,629	198,958	100,678	-49.4%
------------	---------	---------	---------	--------

Nos. (In)(TEU)

Containers (Dry)	11,176	10,454	9,803	-6.2%
Flatracks	2,145	1,857	1,323	-28.8%
Reefers	3,026	3,206	3,244	1.2%
Trailers	6	0	2	
Tanks	179	219	159	-27.4%
Vehicles	1,727	1,844	1,554	-15.7%

Nos. (Out)(TEU)

Containers (Dry)	11,707	10,515	10,118	-3.8%
Flatracks	2,373	1,921	1,376	-28.4%
Reefers	3,099	3,300	3,302	0.1%
Trailers	4	0	0	
Tanks	199	208	139	-33.2%

Origins(tons)

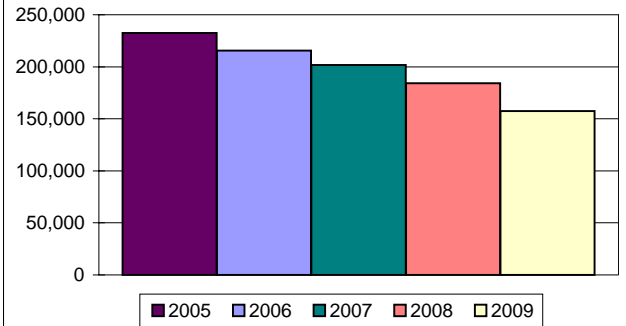
Miami Cargo	51,490	38,714	40,039	3.4%
Tampa	9,596	12,328	10,486	-14.9%
Costa Rica	0	0	0	
Jamaica	10,540	13,682	12,995	-5.0%
Colombia	0	0	0	
Port Everglades	69,436	68,347	55,708	-18.5%
Panama	0	4	465	13098.0%
Japan	524	626	6,559	947.1%
Cuba	39,985	31,239	21,387	-31.5%
Alabama	12,342	8,810	6,690	-24.1%
Nicaragua	0	0	0	
Dominican Rep.	2	44	0	-100.0%
Mexico	0	200.79	45.59	-77.3%
Maryland, USA	3,086	0	0	
London	18	3	1	-79.3%
Puerto Rico	91.76	75.62	171.12	126.3%
Honduras	4,549	8,546	1,073	-87.5%
Bahamas	0	0	0	
Santo Domingo	99	937	0	
Other	431.38	773.92	1,793.69	131.8%

Imp. Gallons

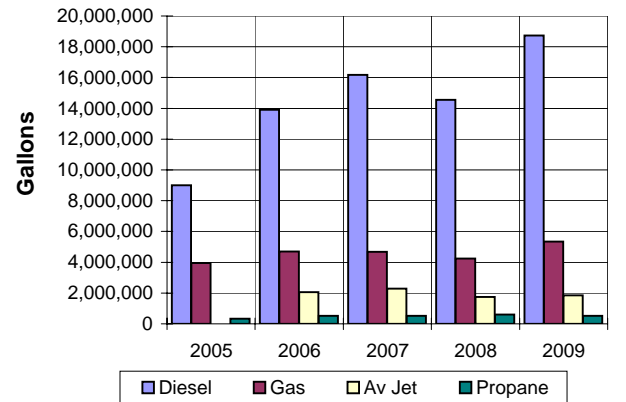
Diesel	16,164,650	14,559,298	18,727,959	28.6%
Gas	4,675,617	4,245,739	5,336,467	25.7%
AV Jet	2,291,295	1,752,664	1,855,052	5.8%
Propane	521,180	597,023	526,769	-11.8%

Passenger Ships Calls	450	379	347	-8.4%
Passengers	1,162,141	1,009,988	953,057	-5.6%

Port Authority Domestic Cargo (YTD)



Port Authority Tanker Statistics (YTD)



Port Authority Cruise Ship Passengers (YTD)

