

Port Report (YTD)

5-Feb-2010

January

	2008	2009	2010	% 2010/2009
Ships Trading	16	12	14	16.7%
Port Calls	41	38	34	-10.5%
Ship Hours Worked	404	331	230	-30.5%
Working Days	29	29	29	0.0%
Working Days Without Ships	6	5	7	40.0%
Overtime (Hours)	37	17	31	82.4%

Cargo (Imported) Tons

	2008	2009	2010	% 2010/2009
Cargo	25,003	22,581	20,142	-10.8%
Intransit Cargo	0	0	0	
Tons Handled per Hour	61.89	68.22	87.57	28.4%
Containerized Cargo	18,981	18,491	16,891	-8.7%
Break Bulk Cargo	1,018	1,184	374	-68.4%
Cement Bulk	5,004	2,906	2,877	-1.0%
Cement (Bagged)		0	0	

Aggregates	33,248	14,511	10,791	-25.6%
------------	--------	--------	--------	--------

Nos. (In)(TEU)

	2008	2009	2010	% 2010/2009
Containers (Dry)	1,380	1,338	1,350	0.9%
Flatracks	207	161	116	-28.0%
Reefers	418	471	467	-0.8%
Trailers	0	0	0	
Tanks	16	25	20	-20.0%
Vehicles	61	266	192	-27.8%

Nos. (Out)(TEU)

	2008	2009	2010	% 2010/2009
Containers (Dry)	1,450	1,702	1,322	-22.3%
Flatracks	239	208	141	-32.2%
Reefers	457	543	457	-15.8%
Trailers	0	0	0	
Tanks	23	20	25	25.0%

Origins(tons)

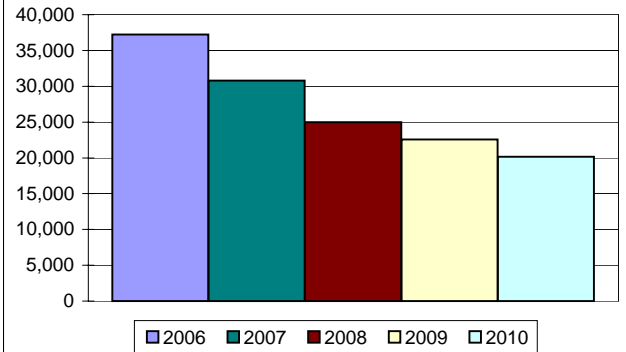
	2008	2009	2010	% 2010/2009
Miami Cargo	4,428	5,389	5,921	9.9%
Tampa	1,413	1,233	985	-20.1%
Costa Rica	0	0	0	
Jamaica	2,265	2,213	2,089	-5.6%
Bahamas	0	0	2,877	
Port Everglades	8,845	9,178	7,430	-19.1%
Panama	0	2	11	450.2%
Japan	0	134	109	-18.7%
Cuba	5,100	2,906	18	-99.4%
Alabama	1,625	1,445	605	-58.1%
Nicaragua	0	0	0	
Dominican Rep.	0	0	0	
Mexico	82	0.00	59.08	
Maryland, USA	0	0	0	
London	0	0	0	
Puerto Rico	11.26	18.19	29.16	60.3%
Honduras	1,169	0	0	
Trinidad	0	0	0	
Santo Domingo	0	0	0	
Other	65.84	62.61	7.75	-87.6%

Imp. Gallons

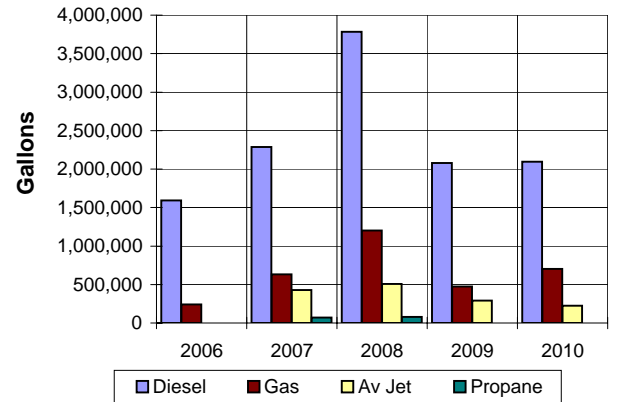
	2008	2009	2010	% 2010/2009
Diesel	3,782,552	2,079,982	2,094,836	0.7%
Gas	1,201,399	472,461	703,286	48.9%
AV Jet	507,229	292,700	226,518	-22.6%
Propane	79,875	0	0	

	2008	2009	2010	% 2010/2009
Passenger Ships Calls	80	64	64	0.0%
Passengers	195,217	158,868	165,378	4.1%

Port Authority Domestic Cargo (YTD)



Port Authority Tanker Statistics (YTD)



Port Authority Cruise Ship Passengers (YTD)

